

## NEPEAN HOSPITAL CHILD AND ADOLESCENT MENTAL HEALTH SERVICES - CAMHS

NSW Health Infrastructure



**Client** NSW Health Infrastructure  
**Value** \$20 million  
**Dates** Mar 2024 - Feb 2026  
**Location** Nepean Hospital

### Project Profile

Donnelley Constructions was engaged by NSW Health Infrastructure to deliver the \$20 million Child and Adolescent Mental Health Services (CAMHS) facility at Nepean Hospital. The project began with the demolition of the existing Nepean 1 and 2 buildings, including hazardous material removal, tree clearing, and site preparation to enable the redevelopment.

The main works involved the construction of a two storey, purpose built facility designed to provide specialised mental health services for children and adolescents. The building accommodates 10 patient bedrooms with ensuites, a dedicated carers bedroom, treatment and medication rooms, reception and staff office spaces.

It also incorporates a range of therapeutic and wellbeing spaces, including a sensory room, learning centre, and exercise room, ensuring a holistic and supportive environment for patients. External works included a new driveway, parking areas, and landscaped outdoor spaces featuring both quiet and active courtyards designed to promote patient wellbeing and therapeutic activities.

“ This project demonstrates the Donnelley Constructions ability to deliver high quality, safe and functional healthcare environments within operational hospital settings ”

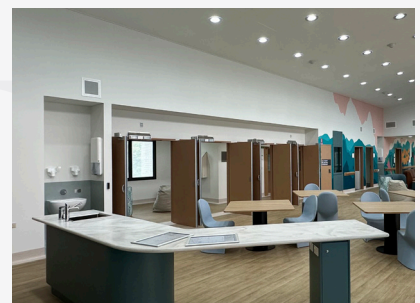


## Project Challenges

Delivered within a live hospital campus adjoining the operational Adult Mental Health Unit (AMHU) and main pedestrian entrance to the campus, the project required meticulous planning and coordination to ensure the safety of patients, staff, and visitors. Project delivery included the installation and coordination of specialised mental health furniture, fixtures, equipment, and enhanced security measures, reflecting Donnelley Constructions extensive experience in complex mental health projects.

All construction works were subject to strict hospital approval processes, with detailed work notifications submitted weeks in advance to avoid disruption to hospital operations. The sites proximity to a public roadway used by general traffic and emergency vehicles required careful management of deliveries, pedestrian access, and vehicle movements. The project also required close coordination with hospital stakeholders to integrate ICT services and ensure connectivity with existing hospital systems, including the commissioning and testing of building services, security systems, and communications infrastructure.

This project demonstrates the Donnelley Constructions ability to deliver high quality, safe and functional healthcare environments within operational hospital settings, while maintaining strict compliance, program efficiency and patient centred outcomes.



**Building Contractor and Project Managers**

Unit 1, 8 Anella Avenue Castle Hill NSW 2154

02 9634 1233 | [www.doncon.com.au](http://www.doncon.com.au)

ABN 66 000 179 028

 **DONNELLEY**  
CONSTRUCTIONS